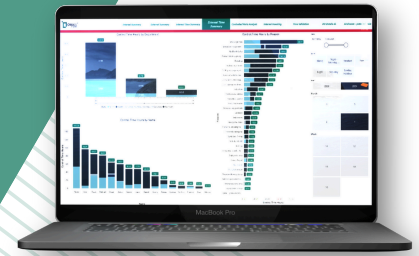


Try QWall in a demo version

Contact us and schedule a demonstration of our system's capabilities.



Key features



ENTERPRISE CLASS

Provides the highest level of security, reliability, and integration with existing ecosystems (e.g., SAP, MS Dynamics). Perfectly tailored to the needs of small and large enterprises.

AUTHORIZATION

Ensures role-based authorization, enables multi-factor authentication. Provides access to the platform on any trusted device.

FLEXIBILITY

Completely adapts to any process, offering custom functionalities tailored to the client's needs. Reflects the modeled process and allows the use of QWall Forms for in-depth data registration and process verification.

TRACEABILITY

Allows monitoring of products at every stage of the process. Verifies step-by-step compliance with custom and complex rules, eliminating the "black box" of the quality control area.



DATA COLLECTION

Allows the definition of process steps, such as taking photo documentation, scanning various codes, checklists, registering data from PLCs, sensors, production lines, and many other sources.

INTEGRATION

Integrates with external systems through an extensive API or file exchange.

DOCUMENTATION

Allows generating and storing full process documentation in one place.

EASE OF USE

Adapts to your needs. Both quality technicians and managers operate only on the functionalities they need.

ANALYSIS

Offers continuous statistical analysis, allowing quick response to production process anomalies.

REPORTS

Generates data in any form and frequency, in real-time or on demand.

Business benefits

Increased customer satisfaction through:

- improved product quality,
- easier communication with the customer,
- ensuring compliance with product quality parameters.

Efficiency through:

- reducing the occurrence of complaints,
- avoiding costs associated with product recalls,
- reducing downtime caused by defects.

Compliance through:

- a single source of knowledge about the process and its outcomes,
- data and analysis available in real-time or on demand,
- ensuring the completion of all quality control steps.

Responsiveness through:

- ensuring order in quality processes,
- quick implementation of software changes due to process changes.



Contact us



+48 885 569 888



sprzedaz@qsense.pl



qsense-group.com
qsense.pl/qwall



Shield in the fight against incompatibilities

QWall is world-class firewall management software used by leading automotive manufacturers.



Created by Quality Managers for Quality
Managers